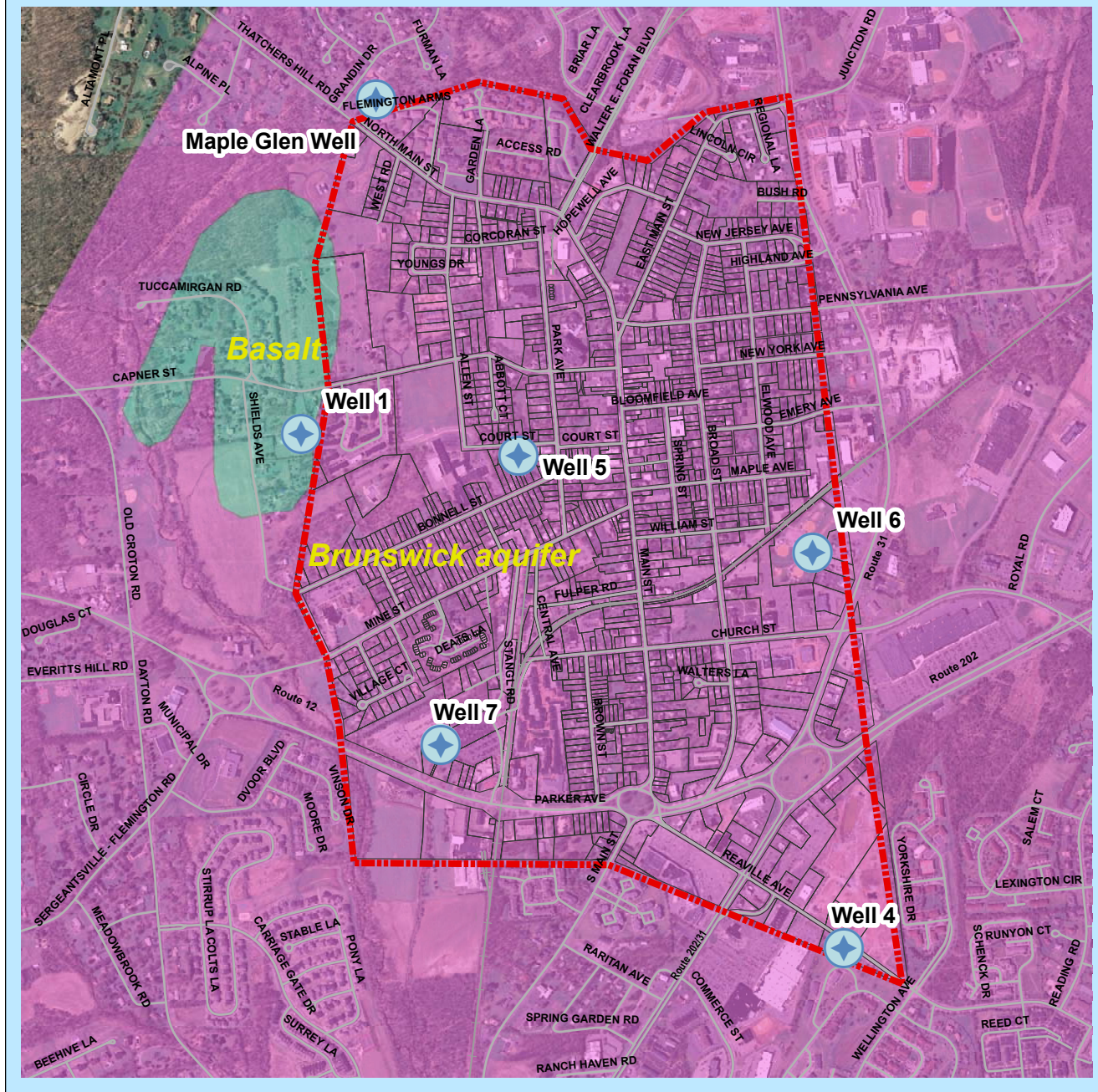
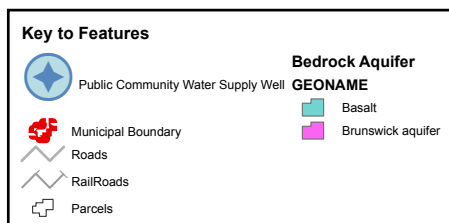


# Map 3 - Flemington Borough Public Water Supply Wells and Bedrock Aquifers



0 750 1,500 3,000 Feet



Prepared By: Flemington Borough Environmental Commission  
February 2010

Sources:  
- Hunterdon County Division of GIS  
- NJDEP GIS Data

Base Photographs:  
2007 NJ High Resolution Orthoimagry  
Plate Nos. E8D12, E8D16, F8C9, F8C10, F8C13, F8C14

