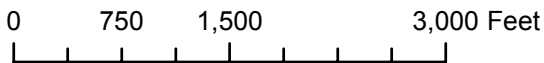
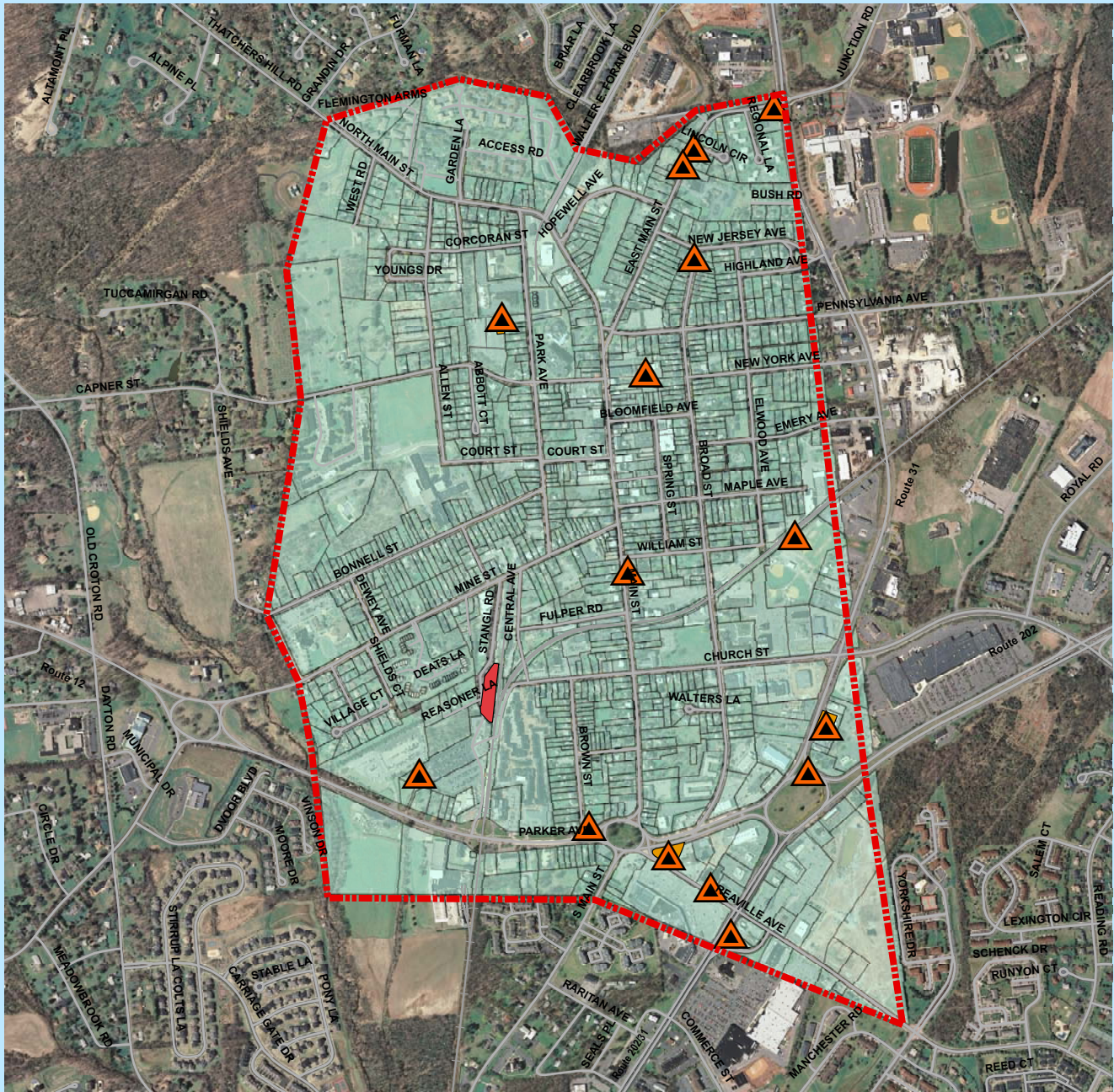


Map 11 - Flemington Borough Known Contaminated Sites



Key to Features

- | | |
|---|--|
|  Municipal Boundary |  Roads |
|  Known Contaminated Sites List (2009) |  Rail/Roads |
|  Deed Notice Area (2004) |  Flemington Parcels |
|  Groundwater Contamination Area 2009 (CEA) | |

Prepared By: Flemington Borough Environmental Commission
February 2010

Sources:

- Hunterdon County Division of GIS
- NJDEP GIS Data

Base Photographs:

2007 NJ High Resolution Orthoimagry
Plate Nos. E8D12, E8D16, F8C9, F8C10, F8C13, F8C14

